

# ATKOMATIC

## 500 Series

Bronze, Pilot-piston, Pressure 5 to 300 psig (0.4 to 21 bar)  
Low Pressure Valve Configurable for Variety of Fluid Applications



### Features

- Pressures to 300 psig (21 bar)
- Fluid temperatures from  $-100^{\circ}\text{F}$  to  $+450^{\circ}\text{F}$  ( $-73^{\circ}\text{C}$  to  $+232^{\circ}\text{C}$ )
- For use with any gas or liquid (max. viscosity of 150 SUS), including steam, that is not harmful to bronze
- Pipe sizes from  $\frac{1}{4}$ " through  $1\frac{1}{2}$ " NPT (British BSPT ports available)
- Full ported valves: Cv from 1.4 to 21
- Pilot operated: requires a minimum pressure differential of 5 psig
- Available in normally open and normally closed versions
- Optional pilot and piston seat materials of Teflon®, Kel-F®, Buna N, Viton®, EPR, or metal (316 stainless steel pilot and/or brass piston seat) depending on fluid type and pressure
- Body seal materials of Teflon®, Viton®, Buna N, or EPR.
- Bronze valve material (naval M Bronze)
- Coils housings available in NEMA 1 (standard), NEMA 4 (waterproof), NEMA 7 (explosion-proof for hazardous locations), and combination NEMA 4 & 7
- Manual opening and throttling devices are available as options
- Class B coils are available for media temperatures of  $0^{\circ}\text{F}$  through  $+220^{\circ}\text{F}$  ( $-18^{\circ}\text{C}$  through  $+104^{\circ}\text{C}$ )
- Class H coils are available: recommended for media temperatures of  $-100^{\circ}\text{F}$  through  $+450^{\circ}\text{F}$  ( $-73^{\circ}\text{C}$  through  $+232^{\circ}\text{C}$ )
- Treated 416 stainless steel plunge material for increased corrosion resistance

### Circle Seal Controls

2301 Wardlow Circle • P.O. Box 3300 • Corona, CA 92880

Phone (951) 270-6200 Fax (951) 270-6201

www.circle-seal.com • am\_sales@circle-seal.com • ind\_sales@circle-seal.com

atkomatic solenoid

# 500 Series

## Operational Pressures (5 psid minimum pressure differential)

Normally Closed 500–560 ¼"–1½"

GASES		LIQUIDS TO 40 SUS		LIQUIDS OVER 40 SUS		STEAM	
AC	DC	AC	DC	AC	DC	AC	DC
300	300	300	300	300	100	125	125

Normally Open 501–561 ¼"–1½"

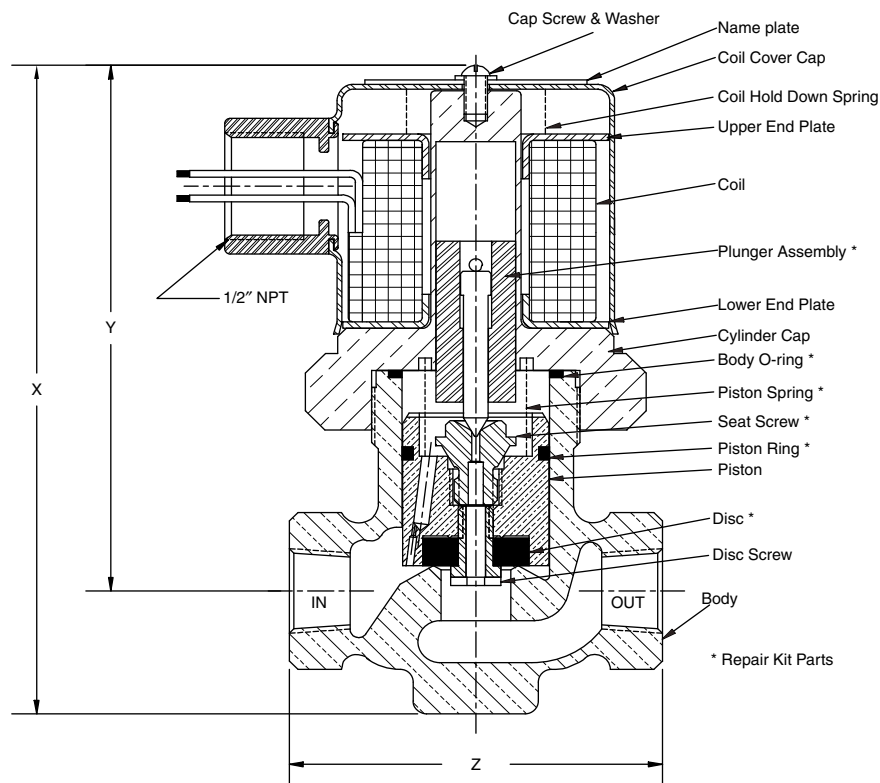
GASES		LIQUIDS TO 40 SUS		LIQUIDS OVER 40 SUS		STEAM	
AC	DC	AC	DC	AC	DC	AC	DC
300	300	200	200	100	100	125	125

NOTE: Normally open valves are rated for intermittent duty only on 500 Series valves and are not recommended for cryogenic service.

## Dimensions, Shipping Weights, and Cv Flow Factors

### Normally Closed

CATALOG NUM.	PREFIX	PIPE SIZE	MAIN SEAT ORIFICE DIA.	X	Y	Z	SHIPPING WEIGHT (lbs)	Cv
500	501	¼"	½"	4¾"	3⅞"	2⅛"	3	1.4
510	511	⅜"	½"	4¾"	3⅞"	2⅛"	3	2.7
520	521	½"	½"	4¾"	3⅞"	3"	4	3.5
530	531	¾"	1"	5¼"	4"	3¾"	5	7.5
540	541	1"	1"	5¼"	4"	3¾"	5	9.1
550	551	1¼"	1½"	7"	5⅞"	5⅛"	13	19.5
560	561	1½"	1½"	7"	5⅞"	5⅛"	13	21.0



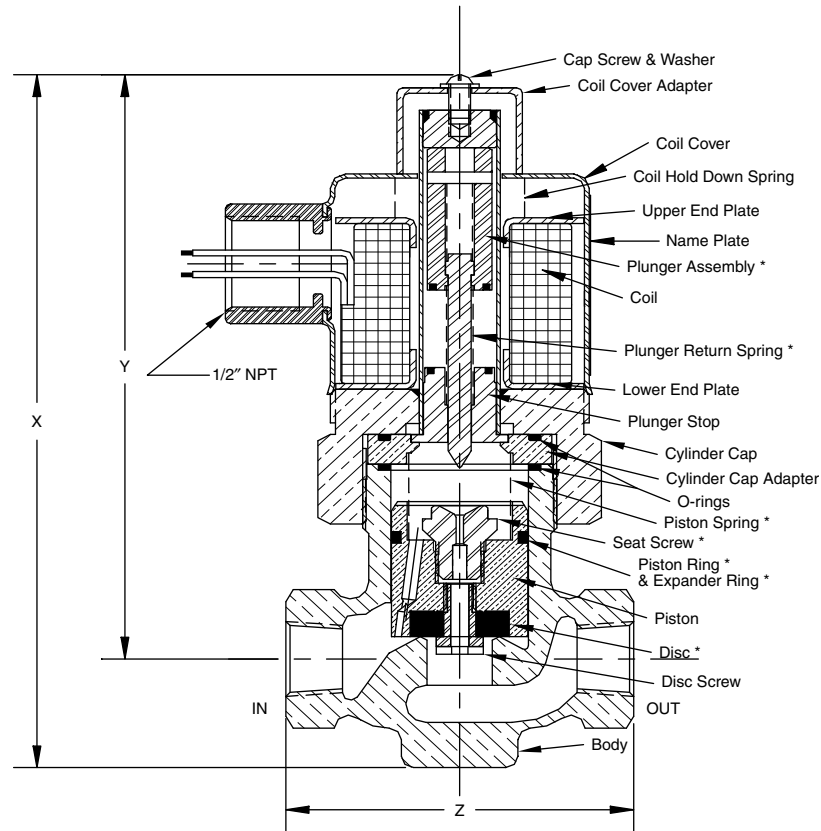
Normally closed ¼" 500 Valve: shown with a standard NEMA 1 coil housing and a metal pilot seat

# 500 Series

## Dimensions, Shipping Weights, and Cv Flow Factors

### Normally Open

CATALOG NUM. PREFIX		PIPE SIZE	MAIN SEAT ORIFICE DIA.	DIMENSIONS			SHIPPING WEIGHT (lbs)	Cv
N.C.	N.O.			X	Y	Z		
500	501	1/4"	1/2"	5 3/4"	4 13/16"	2 1/16"	3	1.4
510	511	3/8"	1/2"	5 3/4"	4 13/16"	2 1/16"	3	2.7
520	521	1/2"	1/2"	5 3/4"	4 13/16"	3"	4	3.5
530	531	3/4"	1"	6 1/8"	4 7/8"	3 3/4"	5	7.5
540	541	1"	1"	6 1/8"	4 7/8"	3 3/4"	5	9.1
550	551	1 1/4"	1 1/2"	8"	6"	5 1/16"	13	19.5
560	561	1 1/2"	1 1/2"	8"	6"	5 1/16"	13	21.0



\* Repair kit parts

Normally open 1/4" 501 Valve: shown with a standard NEMA 1 coil housing and metal pilot seat.

# 500 Series

## How to Order

